



ADF Series

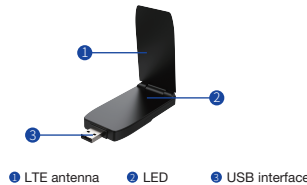
Quick Start Guide

www.adituswireless.com

Welcome to the ADF Series

ADF Series dongles provide LTE service in a small form factor. With diversified self-developed LTE embedded mini-PCIE modules integrated, ADF Series dongles support multi-band for most operator's bands and Private LTE, even support special bands.

Device Architecture



Working Environment

Operating Temperature	-10°C ~ 45°C
Storage Temperature	-40°C ~ 70°C
Humidity	5% ~ 95% (Non-condensing)
Power Consumption	< 2.5W
Operating System	Windows (Win7/Win8/Win10) Mac (Mac OS 10.10 or above) Linux Chrome OS

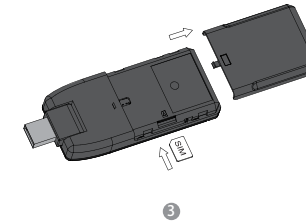
Hardware Configuration

Install SIM Card

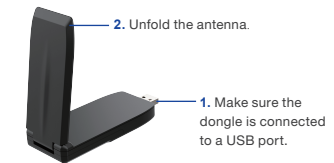
Step1 Remove the cover of the dongle.

Step2 Insert the SIM card into the SIM slot on the side and put it in the right position.

Step3 Re-attach the cover.



Connect and Turn on the USB Dongle



Connect to the Network

It takes several seconds to connect to LTE network. The sequence of different LED status is as follows.

1. LED indicator starts with a red light.
2. Then LED indicator becomes blinking green.
3. When connected successfully, LED shows static green.

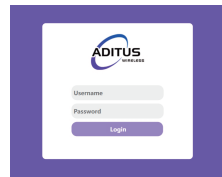
Software Configuration

Login to the Web Management Page

Step1 Launch the web browser, enter <http://192.168.0.1/pub/login.htm> in the address bar, and press Enter.



Step2 Enter the username and password, and click Login.



Step3 After the password is verified, you can login to the web management page.

The default username and password are both **admin**. If you want to view or configure the dongle, you should use the super account to login to the web management page. The default super username is **superadmin**, and the password is **admin**.

LTE Settings

Step1 Choose **Network > LTE Settings**.

Step2 On **LTE Settings** page, you can set the configuration of the LTE network.

Step3 In the **Status** list, you can view the LTE status, such as Frequency, RSSI, RSRP, RSRQ, CINR, SINR, Cell ID and etc.

LTE Settings	
Settings	
Status	Connected
Connect Method	Auto
LTE Status	
DL MCS	0
UL MCS	0
DL Frequency	874.28MHz
UL Frequency	830.28MHz
Band	6
Bandwidth	18MHz
RSRP	-17dBm
RSRQ	-10dBm
SINR	-10dBm
RSRQ	-10dB
SNR	4dB
CINR	1.0dB
CINR1	1.0dB
Tx Power	-10.0dBm
PCI	110
Cell ID	28

FAQs

The POWER indicator does not turn on.

- Make sure the dongle is connected properly to a USB port.
- Make sure the output power of the USB port is compatible with the dongle.
- Try to unplug, then plug the dongle into the USB port again or into a different USB port.
- If the problem persists, please contact the authorized local service suppliers.

Fails to Login the web management page.

- Make sure that the dongle is powered on.
- If the problem persists, please contact the authorized local service suppliers.

The dongle fails to search for the wireless network.

- Check if the antenna is open and not folded.
- Check if the indicator light is static green.
- Check if the dongle is placed in an open area.
- If the problem persists, please contact the authorized local service suppliers.

The parameters are restored to default values.

- If the dongle is powered off unexpectedly while being configured, the parameters may be restored to the default settings.
- After configuring the parameters, download the configuration file and restore the desired settings quickly.

The dongle does not support SIM card hot-plug, please confirm that the device is powered off when the SIM card is inserted or removed.