



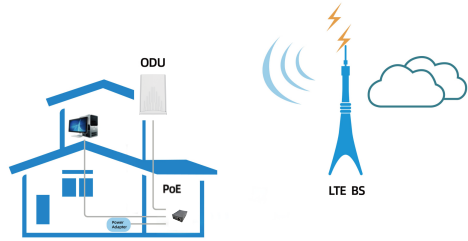
4G CPE ARM310

Quick Start Guide ▶

www.adituswireless.com

Introduction

ARM310 is a highly advanced 4G/LTE outdoor multi-service product solution specifically designed to meet integrated data needs for residential, business and enterprise users. The product supports advanced Gigabit networking functionalities. It enables wide service coverage and provides high data throughput and networking features to customers who needs easy broadband access.



Panel of device



· I/O panel of ODU ·

1

Packing List

Make sure you have everything you need to properly configure the device.

ODU	PoE	Power supply	Ethernet cable
Stainless steel clamp	Cable glands	Slotted end cap	

How does it work

1. Connect the Power Adapter to PoE injector.
2. PoE injector provides the power to ODU via LAN cable.
3. PC connects LAN Cable to PoE, then PC can surf the Internet when ODU accesses the LTE network.

This quick installation guide shows you how to configure your ODU in order to access the Internet.

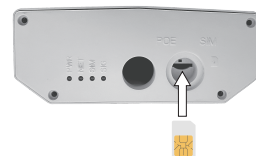
2

Configure hardware

Please make sure that you are familiar with all accident prevention and safety procedures necessary for working at height and with electricity before starting to install the device.
DO NOT install the ODU during a lightning storm.

Insert a SIM Card to the Slot

Make sure the ODU is turned off before you insert your SIM card. It is recommended to NOT connect the PoE cable when you do this step. Otherwise, the SIM card may be damaged.



Mount the ODU

To connect the CAT6 (or above) Ethernet cable:

See the installation instructions to mount the ODU correctly.

Step 1 CAT6 (or above) cable to thread through the cable glands.

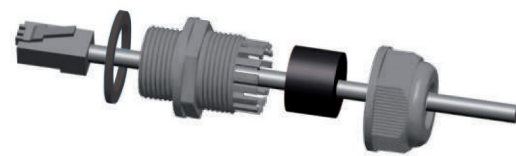
Step 2 Connect the end of the CAT6 (or above) Ethernet cable to the PoE port of the ODU.

Step 3 Wiring the cable glands into ODU and seal tightly.

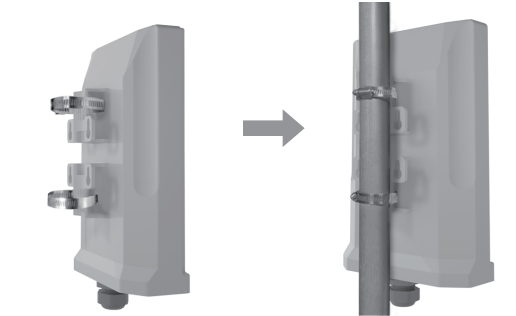
NOTE: Make sure you have inserted the SIM card into the ODU.

3

Header Connection



Mounting Bracket



4

Choose Location

The ODU can be mounted on an antenna pole or mast or on a wall using the supplied mounting bracket.

- Choose a mounting point that is sturdy enough to hold the ODU, even during high winds.
- When choosing a location to install the ODU, please note that the ODU's front panel should point towards your service provider's nearest base station. You do not need to be able to see the base station from the ODU's position. However, if you experience difficulties with signal reception, a Line of Sight (LoS) connection may produce better results.
- It is suggested that you transport the ODU to its intended installation location in its original protective package.

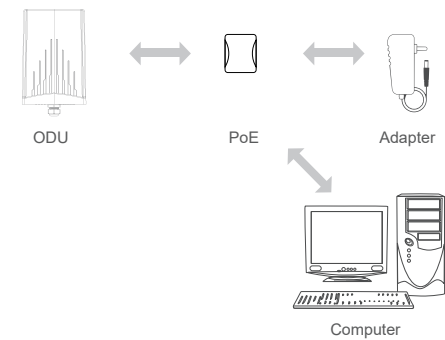
To obtain the best radio signal level and connection quality, the CPE antenna should be aimed towards the best eNB or BS directly. To search for the best eNB direction, the user can rotate the CPE slowly and tilt CPE slightly to find the best signal direction. The CPE radio signal strength level can be observed from the RF LEDs mounted on the lower panel as shown below. Different colored LEDs represent different signal strength.

Connect the PoE

Place a CAT6 (or above) Ethernet cable (not included) from the location of your intended Router to the desired PC location.

If you intend to use cable clamps or other methods to secure the cable, do not tighten them until you finish installing the Router and ODU.

5



Hardware connections of Router

Step 1 Connect the CAT6 (or above) Ethernet cable to PoE.

Do not connect to a computer or switch directly to the PoE port due to high PoE power.

Step 2 Connect the power adapter to the PoE injector. The POWER LED turns on a solid green once connected.

Step 3 Connect the included Ethernet cable from the computer to one of the Router's Ethernet ports.

LED Behavior

When setting up the Outdoor Unit, the LED will have the following behavior:

6

ODU	
	Steady on Power on
POWER	Off No power supply
	Steady on Internet available
INTERNET	Off Internet unavailable
	Blinking (500ms interval) Searching network
SIM	Steady on SIM ready
	Off No SIM detected
	Green Signal strong
SIGNAL	Yellow Signal good
	Red Signal weak
	Off No signal
	Blinking Green and Red (500ms interval) Firmware upgrade

Configure the CPE

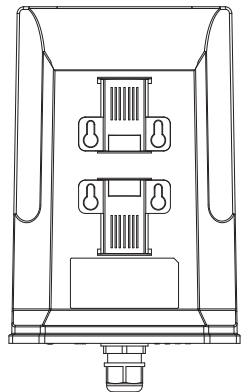
Login to the website

Use a browser to access the management web page to configure and manage the CPE.
The following procedure describes how to use a computer running Windows 7 or above version and Internet Explorer to connect to the CPE webpage.

Step 1 Connect to the CPE correctly.

Step 2 Start Internet Explorer, type http://192.168.225.1 in the address bar, and press Enter.

7



Step 3 Enter the user name and password, and click Log In. You can connect to the management web page after the password is verified.

Configuration of 4G

Step 1 Connect to the CPE correctly.

Step 2 Go to the management website.

Step 3 Choose Advanced Settings>Network > LTE Settings.

Step 4 Set the connection mode and scan mode.

8

LTE Settings	
Settings	
Status	Connected
Connect Method	Auto
Save Cancel	
4G Status	
DL MCS	0
UL MCS	0
DL Frequency	874.2MHz
UL Frequency	820.2MHz
Band	5
Bandwidth	10MHz
RSCP0	-47dBm
RSCP1	-45dBm
RSD	-40dBm
RSPQ	-4dB
SINR	4dB
CINR0	3.6dB
CINR1	3.3dB
Tx Power	45.0dBm
PCI	119
Cell ID	23

The default setting is automatic connection and full band scanning, if you want to connect to the 4G/LTE network according to your needs, you can set the connection mode as manual, and simply scan a specific band.

9

FAQs

The POWER indicator does not turn on.

- Make sure that the power cable is connected to the PoE, and the CPE is connected to the right port of the PoE.
- Make sure that the power adapter and PoE are compatible with the CPE.

Fails to Log in to the web management page.

- Make sure that the CPE is powered on.
 - Verify that the CPE is correctly connected to the computer through a network cable.
- If the problem persists, contact authorized local service suppliers.

The CPE fails to search for the 4G/LTE network.

- Check that the power adapter and PoE have connected to the CPE properly.
- Check that the CPE is placed in an open area that is far away from obstructions, such as concrete or wooden walls.
- Check that the CPE is placed far away from household electrical appliances that generate strong electromagnetic field, such as microwave ovens, refrigerators, and satellite dishes.

- If the problem persists, contact your Internet Service Provider.

The CPE power adapter has overheated

- The CPE is hot after being used for long time. Turn off the CPE when not in use.
- Check that the CPE is properly ventilated and protected from direct sunlight.

10

The parameters are restored to default values.

- If the CPE powers off unexpectedly while being configured, the parameters may be restored to the default settings.
- After configuring the parameters, download the configuration file to quickly restore the CPE to the desired settings.



Notice

Some features of the product and its accessories described herein rely on the software installed, capacities and settings of local network, and may not be activated or may be limited by local network operators or network service providers, thus the descriptions herein may not exactly match the product or its accessories you purchase.
We reserve the right to change or modify any information or specifications contained in this manual without prior notice or obligation.

11